

Product Technical Data Sheet

SC60 (SD60GS)

Smoke Curtain with UL-1784 smoke rated

KEY SPECIFICATIONS

Headbox	0.05" galvanized mild steel with 0.08" end caps
Rollers	2.99" coated mild steel tube
Motors	24V DC
Fabric	X32K
Bottom Bar	0.79" x 0.79" - 0.79" x 1.57" galvanized steel
Side Guides	Optional extra (please specify)
Electronics	See separate spec sheet



STANDARDS

Tested and approved by Underwriters Laboratories LLC to Standards.

- UL10D: Fire Tests of Fire Protective Curtain Assemblies.
- UL1784: Air Leakage Tests of Door Assemblies and Other Opening Protectives.
- UL864: Control Units and Accessories for Fire Alarm Systems.
- UL723: Test for Surface Burning Characteristics of Building Materials.

DESIGNATIONS & SIZE LIMITATIONS

Model	Single Roller	Multi Roller	Max Width (ft)	Max Drop (ft)	Classification	Test Standard	Certificate / Reports
SC60	Yes	Yes	147	39	Smoke rating	UL 10D UL 1784	20151020-R26410 20120808-R26410 ICC-ESR-3322

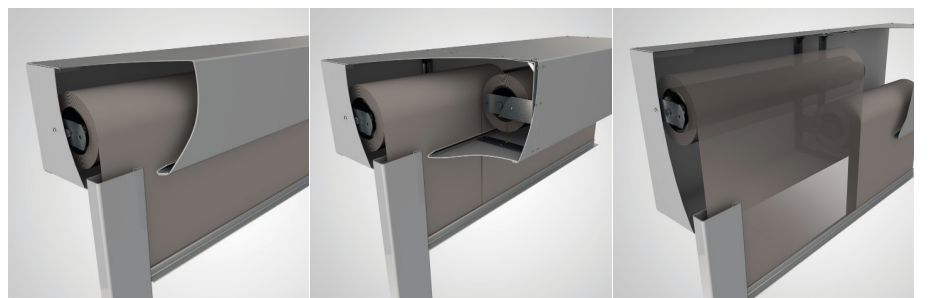
HEADBOX SIZES

The size of the curtain roller housing (headbox), depends on the curtain drop and width. The table below gives details of the full range of headbox sizes for the SC60 fire protective curtains.

Type A: The standard headbox for use with curtain widths up to 16'.

Type B: Headbox for use with curtains up to 147' and limited installation height for headbox.

Type C: The standard headbox for use with curtain widths up to 147'.



	Type A		Type B		Type C	
	Single Roller Headbox (Max Width 16')		Side by Side Headbox (Up to 147')		Over Under Headbox (Up to 147')	
	Roller Width		Roller Width		Roller Width	
Curtain Drop	Up to 8.2'	Up to 16.4'	Up to 8.2'	Up to 16.4'	Up to 8.2'	Up to 16.4'
Up to 4.9'	5.91" x 4.92"	5.91" x 5.91"	9.84" x 4.92"	250 x 5.91"	5.91" x 9.84"	
4.901' - 9.8'	5.91" x 5.91"	7.09" x 7.09"	12.2" x 7.09"		7.09" x 12.2"	
9.801' - 19.7'	7.09" x 7.09"	8.27" x 8.27"	13.78" x 8.27"		8.27" x 13.78"	
19.701' - 29.5'	8.27" x 8.27"	9.06" x 9.06"	15.35" x 9.06"		9.06" x 15.35"	
29.501' - 39.4'	9.06" x 9.06"	9.84" x 9.84"	17.72" x 9.84"		9.84" x 17.72"	

WARRANTY

A manufacturer's warranty is provided for a period of one year. Exclusions may apply if any element is sublet to an unauthorized party.

